



**EXTERNAL SWAGE
HEAVY DUTY INDUSTRIAL
HOSE FERRULES - FC**

FEATURES & APPLICATIONS:

- Use with Industrial HD Male Stems
- When used with corresponding HD Male Stems, provide a permanent end connection to rubber industrial hoses for use in the toughest applications.
- Hose applications: Tank Truck, Chemical, Mud Suction, OS&D, Oil Discharge, Frac-Tank, Water Discharge, Water Suction, Water Jetting, Hot Tar & Asphalt, Material Handling, Textile Air, Wire Air, Petroleum and Marine

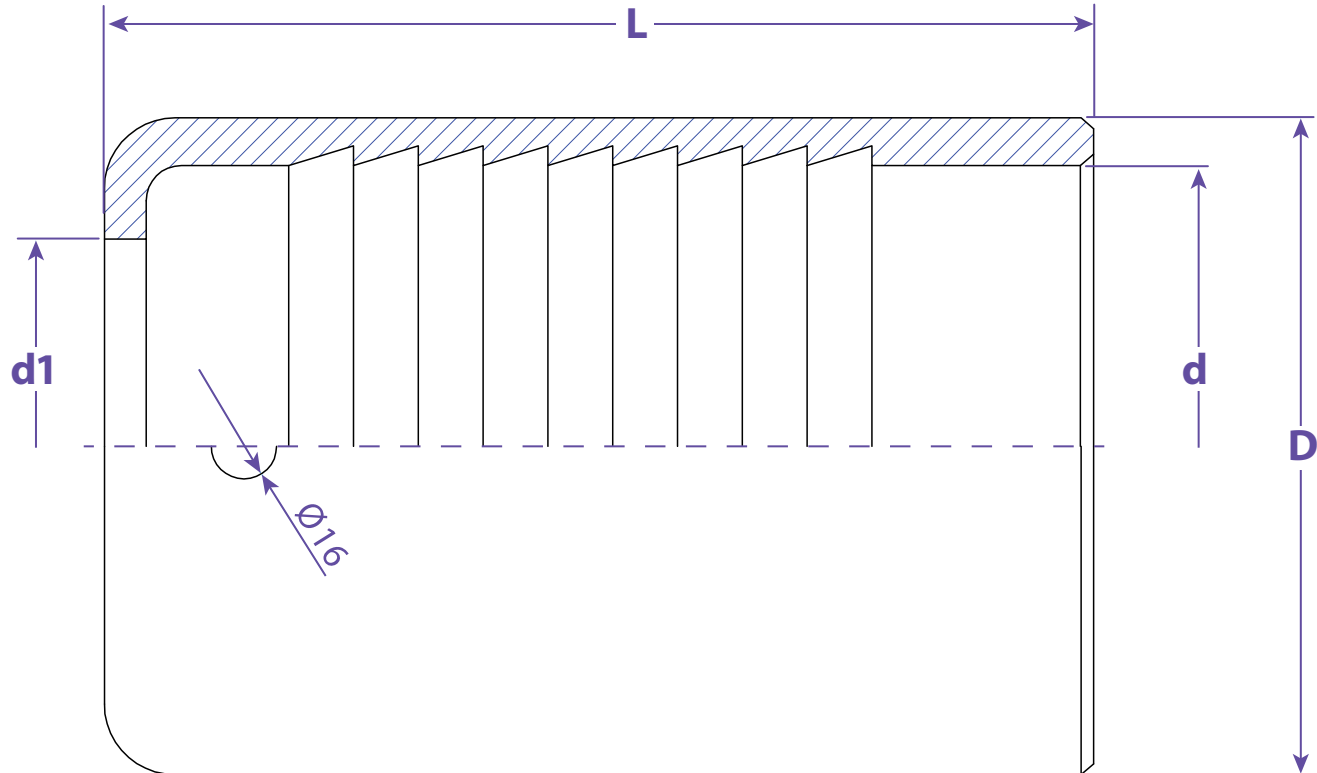


ZINC PLATED STEEL

ZINC PLATED STEEL

I.D.	HOSE OD SIZE RANGE	FERRULE SIZE			FWT	ZINC PLATED STEEL #
		OD	ID	LG		
2"	2-7/8" to 3-1/8"	3-1/2"	3-1/4"	3-1/2"	1/8"	HD200FC
3"	3-7/8" to 4"	4-1/2"	4-1/8"	5"	3/16"	HD300FC
4"	4-15/16" to 5-1/16"	5-9/16"	5-3/16"	5-1/2"	3/16"	HD400FC
6"	7-3/8" to 7-9/16"	8-3/16"	7-11/16"	7-1/2"	1/4"	HD600FC

Information contained on this page is for general information purposes only. Seal Fast Inc. assumes no responsibility for errors or omissions for this product.



Dimensions				
L	D	d	d1	Part #
3.5039	3.5000	3.2520	2.4409	HD200FC
5	4.5	4.1260	3.5827	HD300FC
5.5118	5.5630	5.1890	4.5669	HD400FC
7.4803	8.1890	7.6890	6.7323	HD600FC

TITLE HEAVY DUTY INDUSTRIAL HOSE FERRULES - FB

DISCLAIMER
All drawings and specifications are subject to change without notice. Drawings represent general dimensions of our products. Seal Fast cannot guarantee the dimensions of the part will exactly match those in the drawing. This drawing is the property of Seal Fast Inc. Copying or reproduction of this drawing is expressly prohibited.

MATERIAL

Steel Tube

DRAWING NOT TO SCALE

PART # HD...FC

